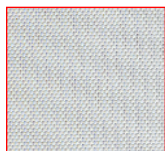


E-Screen

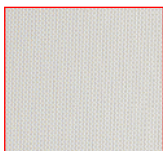


6% or 10% openness options providing excellent glare control & UV protection.

Colour Range



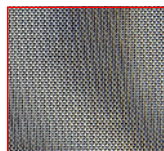
White 6%



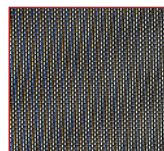
Whisper 6%



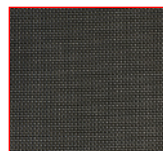
White Pearl 6%



Grey Midnight Linen 6%



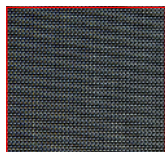
Gravity 6%



Cumberland 6%



Charcoal Cocoa 6%



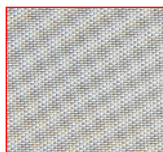
Charcoal Grey 6%



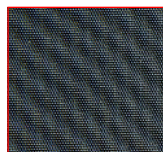
Midnight 6%



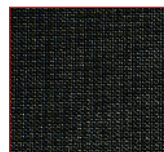
White/White 10%



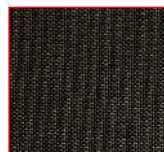
White/Pearl 10%



Charcoal/Grey 10%



Charcoal/Charcoal 10%



Charcoal/Cocoa 10%

Sunscreen Fabric

Roller Blind | Roman Shade | Panel Glide
2.5m, 3.1m widths*

MERMET

E-Screen

Technical Information

| | 6% Openness | 10% Openness |
|----------------------------------------------|---------------------------------------------------------------------------------------------------------------------------------------------------------------------------------------------------------------------------------------------------------|----------------------------------|
| Composition: | 36% Fibreglass, 64% PVC | 36% Fibreglass, 64% PVC |
| Thickness: | 0.42mm ± 10% | 0.52mm ± 5% |
| Weight: | 410g/sm ± 5% | 350g/sm ± 5% |
| Weave Construction: | 2 (warp) x 2 (weft) Basket Weave | 2 (warp) x 2 (weft) Basket Weave |
| Stiffness: | 48mm ± 5mm | 65mm ± 5mm |
| Breaking Strength: (AS 2001.2.3) | 1500N Warp, 1500N Weft | 1900N Warp, 1400N Weft |
| Tearing Resistance: (AS 2001.2.10) | 45N Warp, 65N Weft | 40N Warp, 72N Weft |
| Cutting*: | Ultrasonic, Knife, Crush Cut & Pressure Cut. Can be rail roaded. | |
| Colourfastness: | 6-7 Blue Scale (AS 2001.4.21) | |
| Features: | E-Screen Fabric has been tested and is Greenguard® Gold Certified to meet strict certification criteria for low Volatile Organic Compound (VOC) emissions and is acceptable for use in environments such as schools and healthcare facilities (IEQ-11). | |



Thermal & Visual Properties

| | | | | | | | | | Visual Comfort |
|------------------------------|----|----|----|------|------|------|------|--|----------------|
| | | | | | | | | | TL / TV |
| Midnight 6% | 8 | 3 | 89 | 0.70 | 0.68 | 0.56 | 0.31 | | 9 |
| White 6% | 25 | 60 | 15 | 0.35 | 0.37 | 0.36 | 0.25 | | 19 |
| Gravity 6% | 8 | 11 | 81 | 0.65 | 0.63 | 0.53 | 0.29 | | 7 |
| Charcoal/Charcoal 10% | 12 | 3 | 85 | 0.71 | - | 0.56 | - | | 12 |
| Charcoal/Grey 10% | 12 | 8 | 80 | 0.68 | - | 0.54 | - | | 11 |
| White/White 10% | 25 | 66 | 9 | 0.36 | - | 0.36 | - | | 22 |

Fire Retardancy Information:

Independently tested to AS1530.2^ and AS1530.3*. Suitable for classes 1,2 to 9 (a) - (c) and 10 buildings as per BCA.

| | 6% Openness | 10% Openness |
|--------------------------------------|-------------|--------------|
| Ignitability Index* (Range 0-20): | 0 | 0 |
| Spread of Flame Index* (Range 0-10): | 0 | 0 |
| Heat Evolved Index* (Range 0-10): | 0 | 0 |
| Smoke Developed Index* (Range 0-10): | 4 | 6 |
| Flammability Index*: | 1 | 1 |

| Range: | Item: | Width: | Roll Length: |
|----------------------|-------|--------|--------------|
| 6% - 43.205.5XXM | | 2500mm | 75 sqm |
| 6% - 43.207.5XXM | | 3100mm | 93 sqm |
| 10% - 075103100XXXXH | | 3100mm | 93 sqm |

Care & Cleaning: Dusting with a feather duster is all that is required to keep your fabric looking good. For the removal of stains, dirt and grime, gently wipe fabric skins with a sponge soaked in lukewarm water. If marks are still visible, add a little detergent. Then dry gently with a clean cloth. Test in inconspicuous area before spot cleaning.

Solar protection indicators are laboratory-tested. The most relevant and widely used thermal comfort factors include:

THERMAL COMFORT

Fabric Only
 Ts Solar Transmittance (%)
 Rs Solar Reflectance (%)
 As Solar Absorbance (%)
 Solar radiation is always partially transmitted through, absorbed or reflected by the fabric. The sum of all 3 equals 100. Ts + Rs + As = 100% of solar energy.

GLAZING & FABRIC

Test data has been supplied using the following glazing types:
 •A Clear single glazing (4mm float)
 •B Clear double glazing (4mm float + 12mm space + 4mm float)
 •C Double glazing low-e coating and argon filled (4mm float + 16mm space + 4mm float)
 •D Reflective double glazing with low-e coating and argon filled (4mm + 16mm space + 4mm float)

GTOT (RANGE 0-1)

The Solar Heat Gain Coefficient (SHGC), measures the window's (fabric and glass) ability to transmit solar energy into a room. The SHGC is commonly referred to as g-tot. SHGC/g-tot is a calculation of the g-values of the solar protection device (fabric) and the glazing (A, B, C, D). The lower the GTOT value, the greater its ability to insulate against solar heat build-up.

VISUAL COMFORT

Fabric Only
 TL / TV Light Transmittance (%)
 RL Light Reflectance (%)

The fenestration property tests were conducted in accordance with EN 410 (1998), EN 14501:(2005), and EN 14500:(2008).